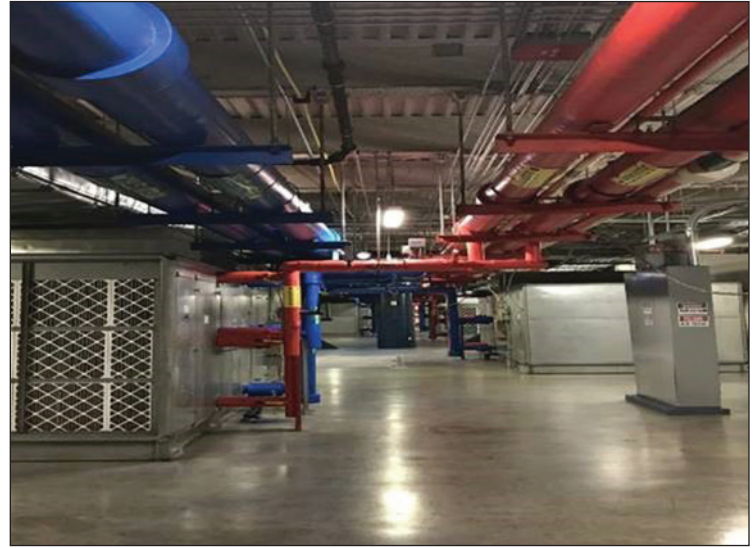


Going Beyond the Basics



The George R. Brown Convention Center before (left) and after TD became Houston First's IFM provider

TDindustries Will Take Care Of Your Facility As If It Were Its Own

When was the last time you used a rental car? Did you treat it as well as your own? Most people have a high standard of care for their own possessions, and facility owners are no exception.

Once the choice has been made to go with an outsourced integrated facilities management company, it can be tough to turn over control. You might ask, "How will they be treating my building?"

The first priority of an integrated facility management (IFM) firm is to make sure the facility's equipment is operating, and at peak efficiency. Most companies stop there, but TD takes pride in aesthetics and exceptional equipment care while providing many other services – including helping your team improve.

"We take an industrial application approach," said James Venegas, Vice President of Houston Facilities. "Everything is painted, color-coded, and labeled. It's not normal to see a bucket on the floor with something dripping. We take pride in what's behind the wall."

Here are just a few examples of how TD focuses on improving facilities.

That care for facilities carries over into TD's work with other partners on the project. At Lone Star College, TD joined the school to create a hybrid facilities team. In the first few months, the focus was on improving safety, maintenance scheduling, and the work-order method.

Why choose TDIndustries?

- Access to specialty knowledge that would be too expensive to maintain internally
- Vast array of trades allow quick response to any issue
- Quality management of all operations and subcontractor installations
- Partners who take ownership of building's health and company's wellness

TD Offers Wide Range of Options for Your Building



3100 Main, before and after TD's facility maintenance began

“We rewrote their project management system,” said TJ Shiflet, Houston facilities group operations manager. “We put the steps in that they needed, and essentially audited the building.”

As a result of TD's mentoring and collaboration with Lone Star College, the hybrid team initiated a water savings project at the central plant. When combined with an irrigation system, this improvement saved Lone Star 35 million gallons in sewer credits. The experienced team saw an opportunity to capitalize on water treatment recommendations by changing the cooling tower feed and reduce total water for cooling. These program changes and upgrades aided in removing mineral deposits from the equipment in the central plant.

“There has to be a lot of trust for them to share control,” Shiflet said. “We helped turn the joint team into a more proactive, efficient, and operational unit.”

TD originally held a service contract at Lone Star. The school quickly saw the value TD provided. When TD bid to become the facilities partner, Lone Star saw a chance to improve its own processes. That's a common trend among facility owners, but TD offers solutions for other life-cycles of your building:

- **New Construction:** TD provides value-added analysis, innovative solutions, added organization, smooth processes,

Lean expertise, and knowledge of large-scale mechanical and plumbing systems. TD understands the importance of collaboration, early and often, to have your project stay within budget, adhere to the schedule, and be constructed safely.

- **Service:** With a fleet of more than 400 vehicles across the Southwest, TD has the resources and the highly-trained, licensed technicians to self-perform every job, including comprehensive emergency service and planned maintenance for non-residential markets.

- **Renovations/Retrofits:** As you expand and grow, TD is there with you to handle all your needs. Expertise offered will give you a thorough, comprehensive evaluation of your current system and provide you with the most cost- and energy-efficient options for improvements – improvements you can rely on. TD can mobilize quickly and deliver reliable, fast-track/change-out solutions. Partners understand how to work safely in a compressed schedule, yet never take their eyes off the critical performance issues at hand. Our goal is to get your business up and running as quickly and efficiently as possible, without compromising your building's occupants or the structure itself.

When you want a company that will keep your facility looking sharp and working at peak efficiency, consider partnering with a group that will treat your facility as well as you do.

